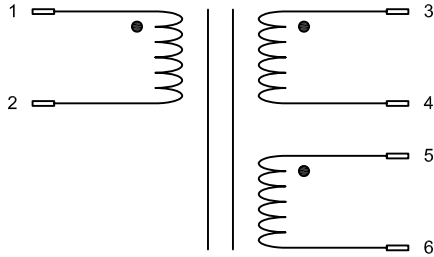


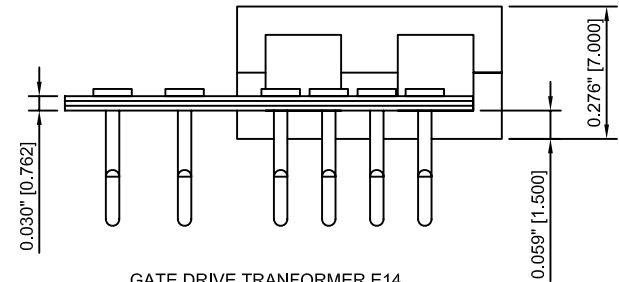
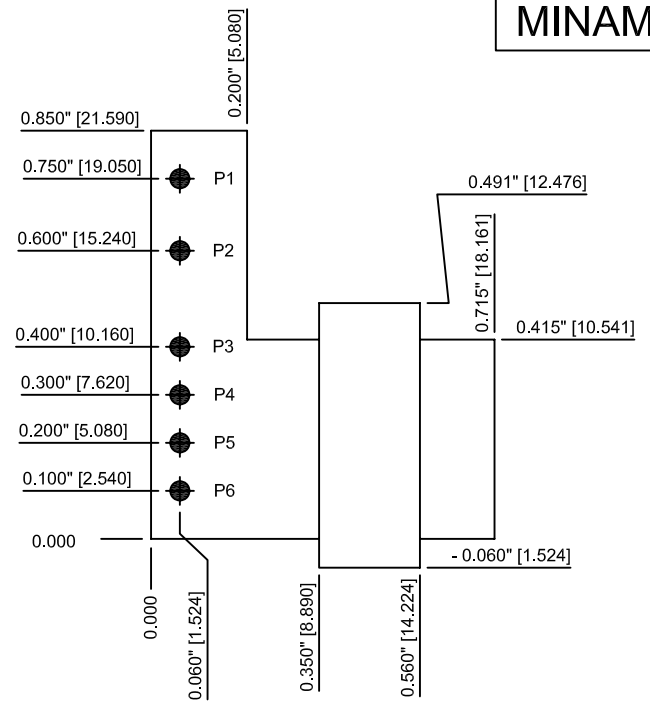
# ELECTRICAL SCHEMATIC GATE DRIVE TRANSFORMER



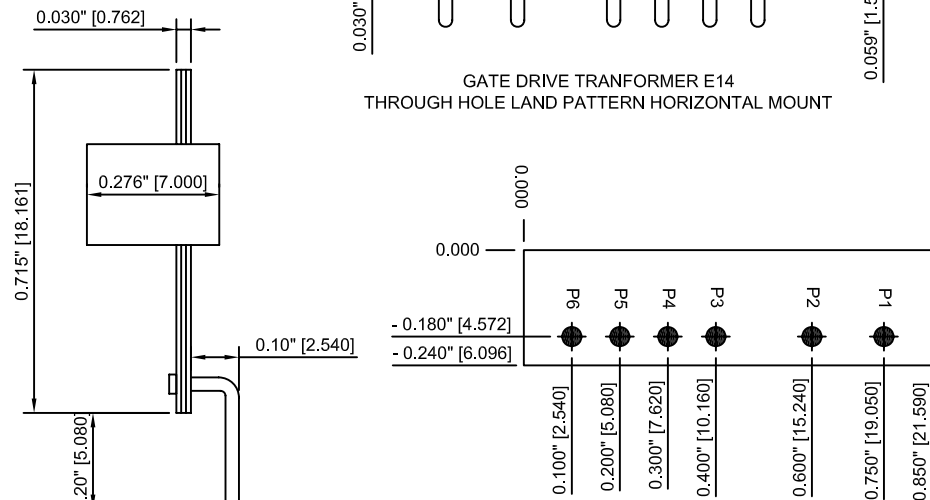
Isolation Primary to Secondary = 4000 V  
 Operating Frequency = 50 kHz to 1 MHz  
 Operating Temperature = -30°C to 150°C

PART NUMBER	URNS RATIO	ET (V*μsec max)	FLUX DENSITY mT	PRIMARY INDUCTANCE μH	LEAKAGE INDUCTANCE GATE TO DRIVE (μH)	DCR DRIVE INPUT & ALL OUTPUT (mΩ)
MGD0122	1:1:1	105.0	1.5	280	0.2	50
MGD0123	1:1:1	105.0	1.5	305	0.2	50
MGD0124	1:1:1	105.0	1.5	1400	0.2	50

\*\*Custom option available



GATE DRIVE TRANSFORMER E14  
 THROUGH HOLE LAND PATTERN HORIZONTAL MOUNT



GATE DRIVE TRANSFORMER E14-EW  
 THROUGH HOLE LAND PATTERN VERTICAL MOUNT

\*\*\* ROUND HOLES ARE 0.040" DIAMETER