

MINA PLANAR MAGNETIC 10kW - 30kW

One of the most significant components that goes into a power supply is the power transformer, Mina can provide you with our unique planar magnetic for your next design or retrofit your existing product with our planar transformer and inductor. With our fifteen years of research and development using new material we can produce new planar constructions thereby producing a highly efficient planar transformer that is lower in cost compared to conventional wire or copper wound transformers across all switch mode power conversion topology and power levels. These planar transformers are available for all switch mode topologies and they provide shielding to minimize or eliminate radiated EMI and RFI. They are suitable for Zero Voltage Switching (ZVS), Zero Current Switching (ZCS) or hard switching application. They also meet military, aerospace, industrial and telecommunication applications requirements. If you do not find a transformer suitable for your applications, we will be glad to provide customer one. Please let us know what you want by either sending us e-mail or completing the form on our website "What I Want". We will respond immediately.

ADVANTAGES

- ❖ Common physical area 2.76 ins [70.104 mm] width by 5.00 ins [127.0 mm] length for any input power/voltage and output power/voltage
- ❖ Low profile
- ❖ Efficiency > 99.5%
- ❖ Very low temperature that provides very high reliability
- ❖ Temperature rise < 35⁰C
- ❖ Very low leakage inductance
- ❖ Optional vertical length or width wise mounting that saves space
- ❖ **Optional retrofit of any existing transformer or inductor planar or conventional**
- ❖ **Low cost**

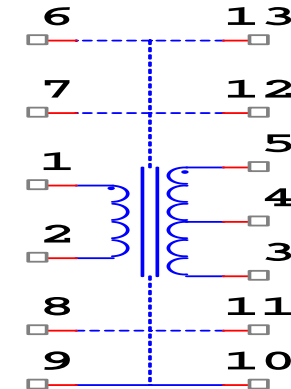
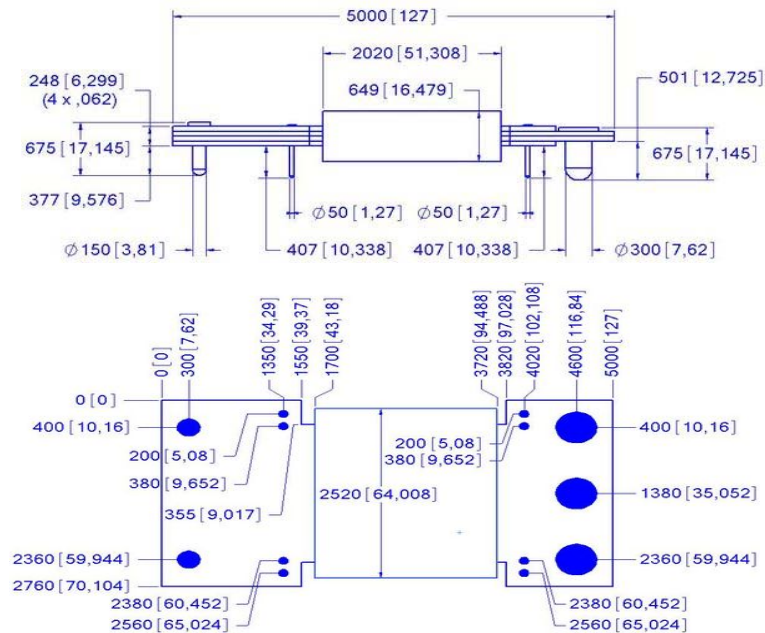
APPLICATIONS

- ❖ High voltage/high power
- ❖ Battery charger
- ❖ Telecom rectifiers
- ❖ Renewable energy
- ❖ Hybrid/electric vehicles
- ❖ Aerospace
- ❖ Defense
- ❖ Medical applications
- ❖ Induction heating
- ❖ Inverter welders



MINA PLANAR MAGNETIC 10kW - 30kW

OUTPUT POWER	INPUT VOLTAGE	FREQUENCY	OUTPUT VOLTAGE	OUTPUT CURRENT	TURNS RATIO	PRIMARY INDUCTORS	TEMP. RISE	MAX. FLUX DENSITY	PART NUMBER
10kW	450V - 650V	100kHz	250V	40A	26:18	9.00mH	10°C	133mT	T-450-250-40
11kW	550V - 600V	50kHz	55V	200A	32:4	13.62mH	14°C	270mT	T-550-55-200
13.5kW	375V - 425V	60kHz	225V	60A	18:14	4.31mH	15°C	270mT	T-375-225-60
15kW	583V - 745V	75kHz	65V	230A	30:4	12.97mH	18°C	200mT	T-583-65-230
16kW	450V - 650V	32kHz	800V	20A	34:40	15.37mH	20°C	310mT	T-440-800-20
20kW	250V - 320V	50kHz	55V	360A	12:3	1.92mH	25°C	320mT	T-250-55-360
30kW	540V - 700V	100kHz	350V	86A	18:14	4.31mH	35°C	230mT	T-540-350-86



GENERAL SPECIFICATION

Isolation:

Primary - Secondary : 6000Vrms

Primary - Core: 3500Vrms

secondary - Core: 3500Vrms